

JAMES POLERA



## FLASK ON IIS

2 minutes read

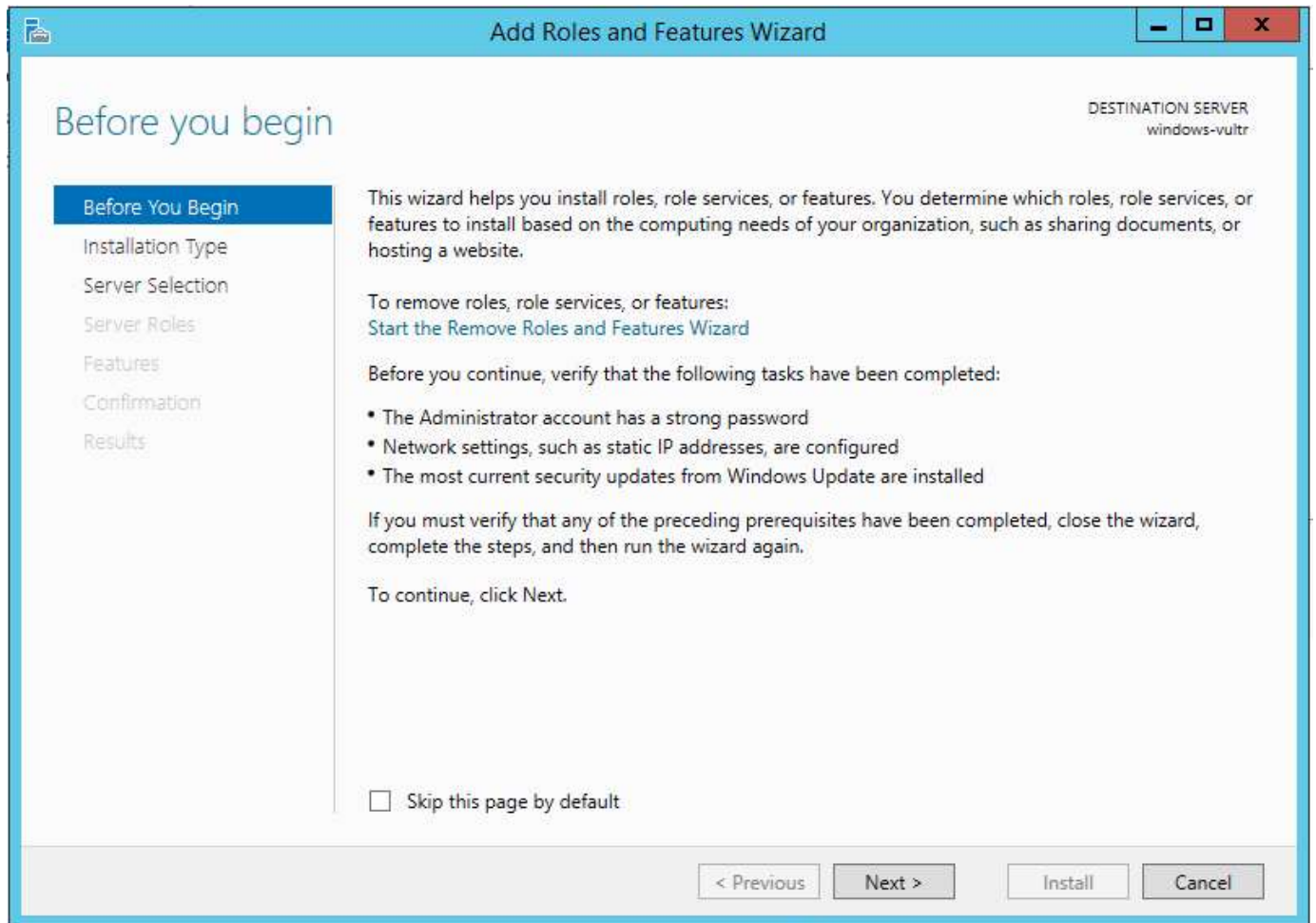
While Windows Server is usually not my preferred OS for deploying Python based web[sites | services] sometimes the situation dictates it. For situations where that is the case I've usually reached for Apache with mod\_python until now. FastCGI is relatively straightforward to setup on Windows Server 2012R2 and IIS using the [Microsoft Web Platform Installer](#).

(NOTE: I'm using Flask, but any WSGI compatible Python app will work the same way)

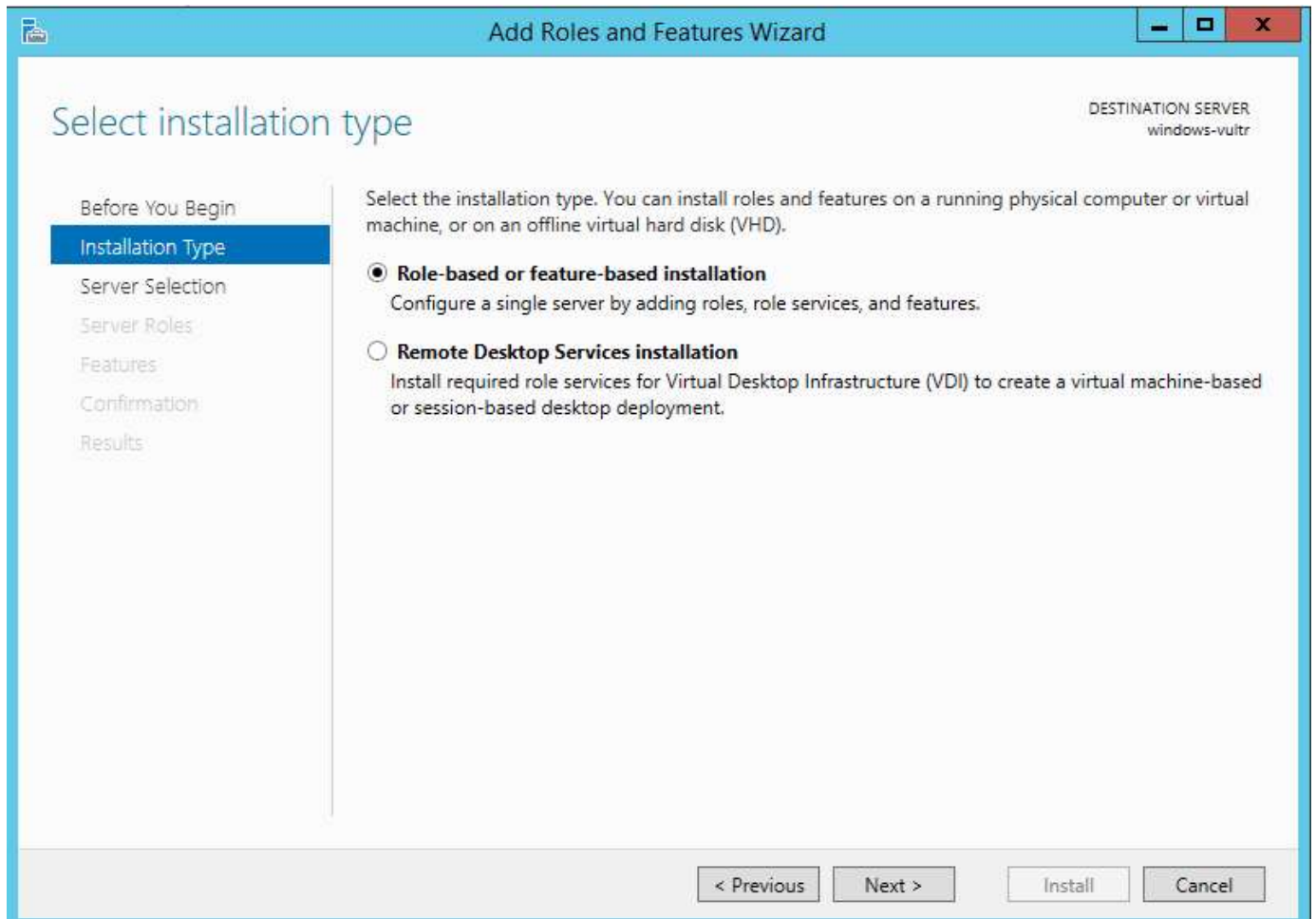
## Installing IIS

You'll need to make sure that IIS is installed and configured with the CGI role service (this enables FastCGI as well).

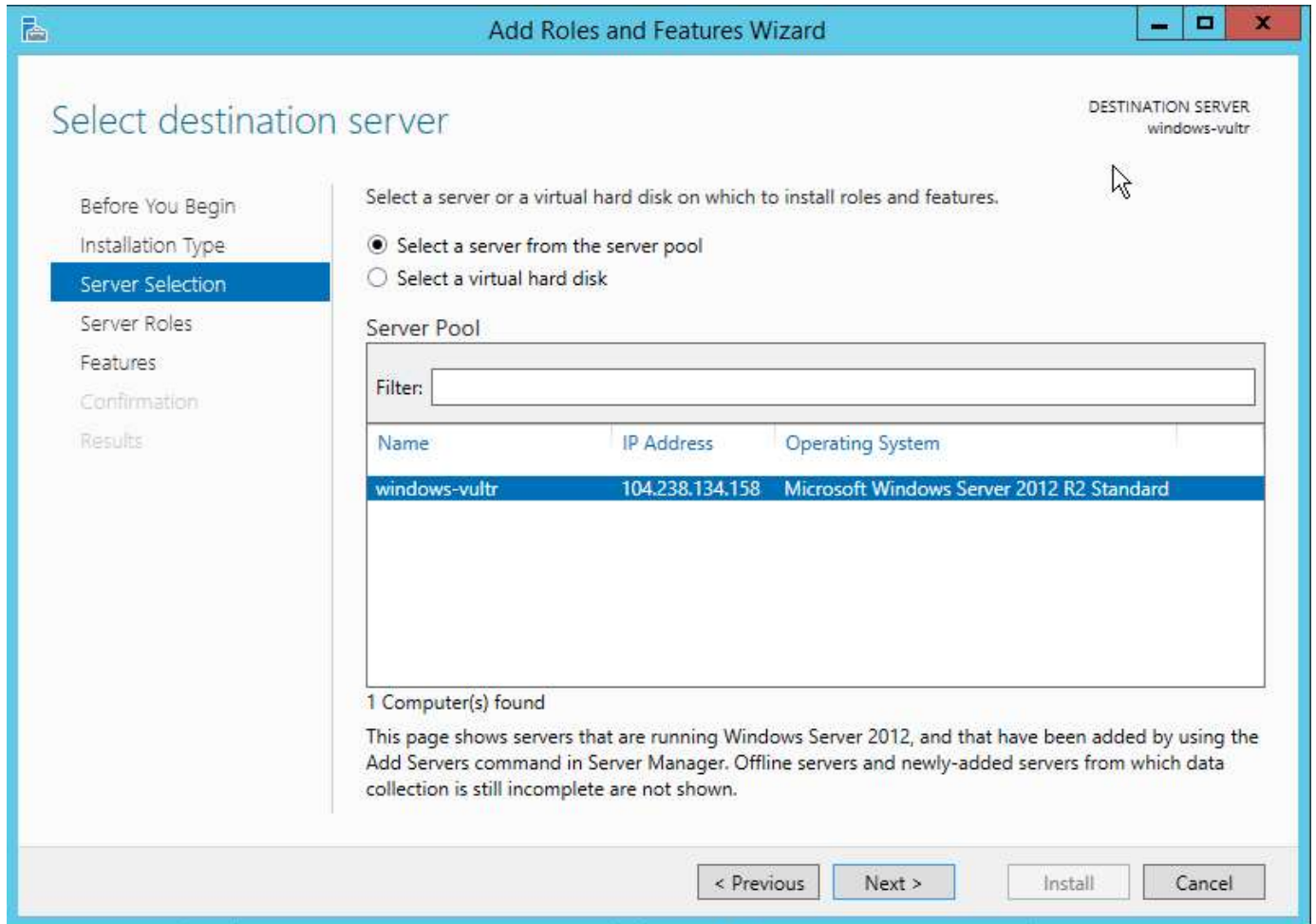
Go to Server manager -> Manage -> Add Roles and Features:



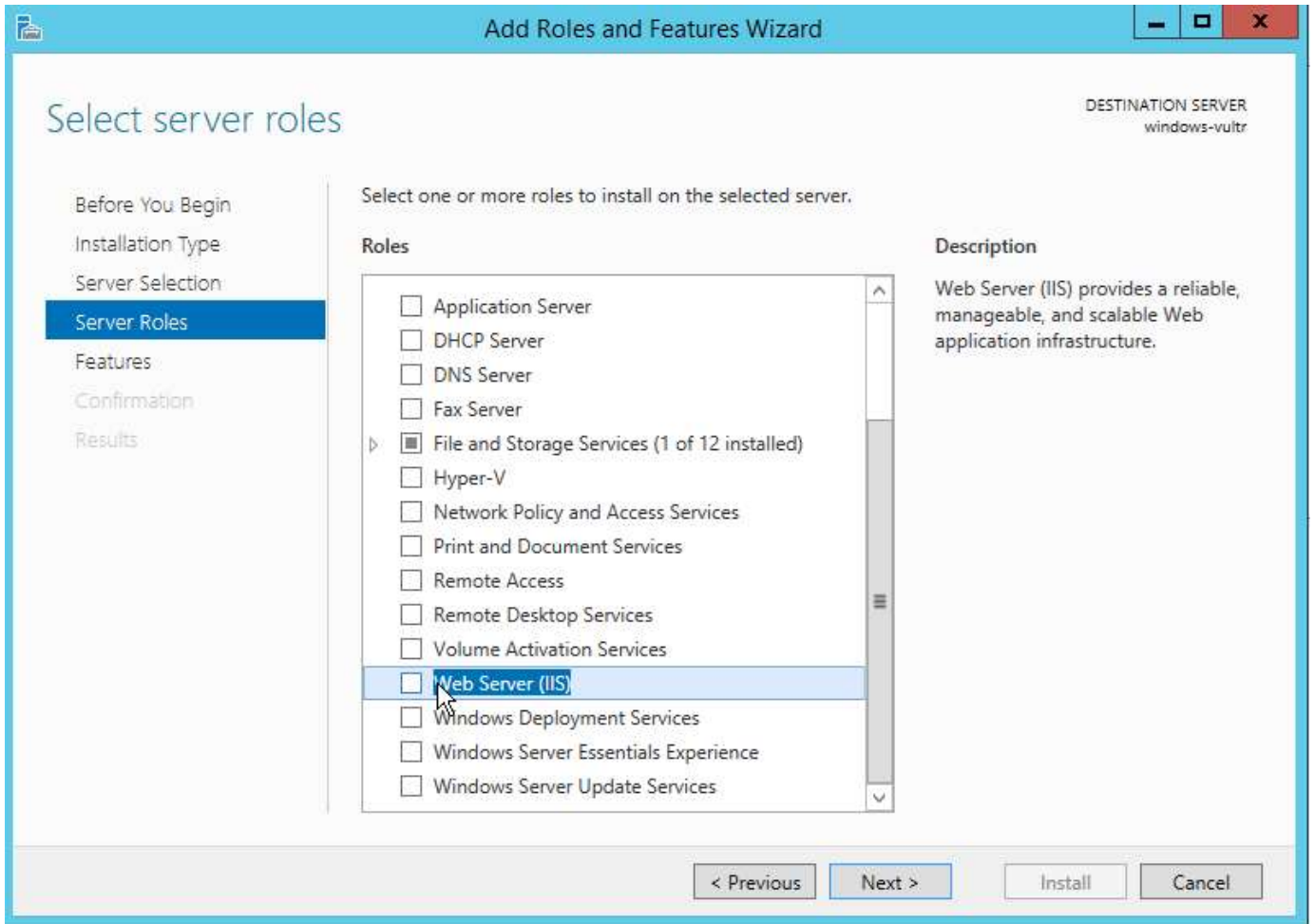
Choose Role-based or feature-based installation:



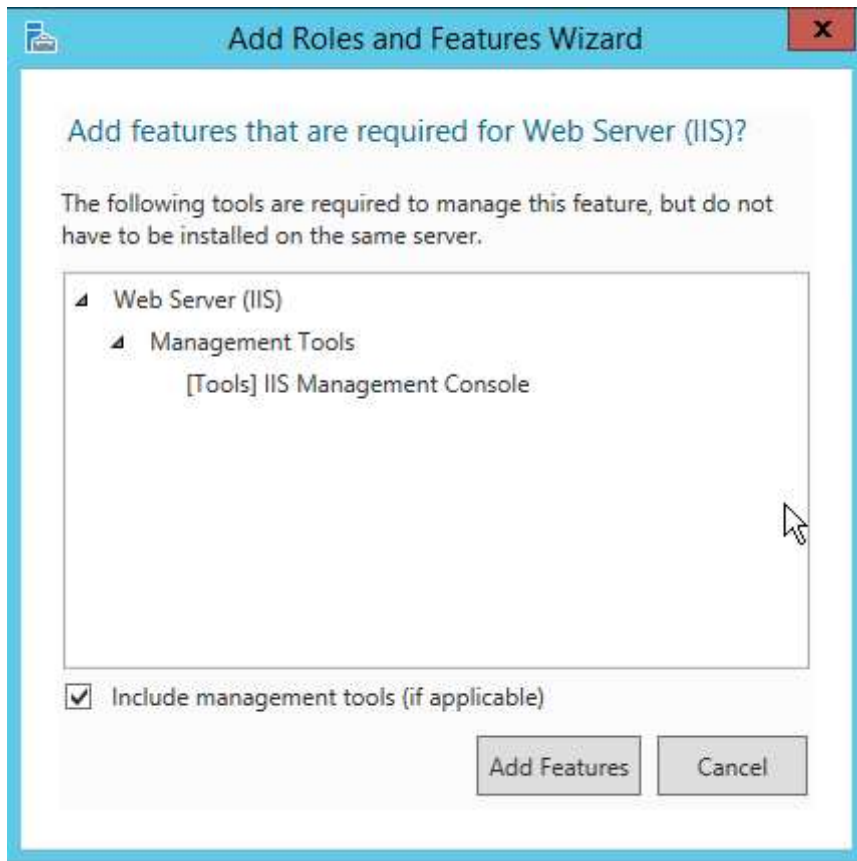
Select your server:



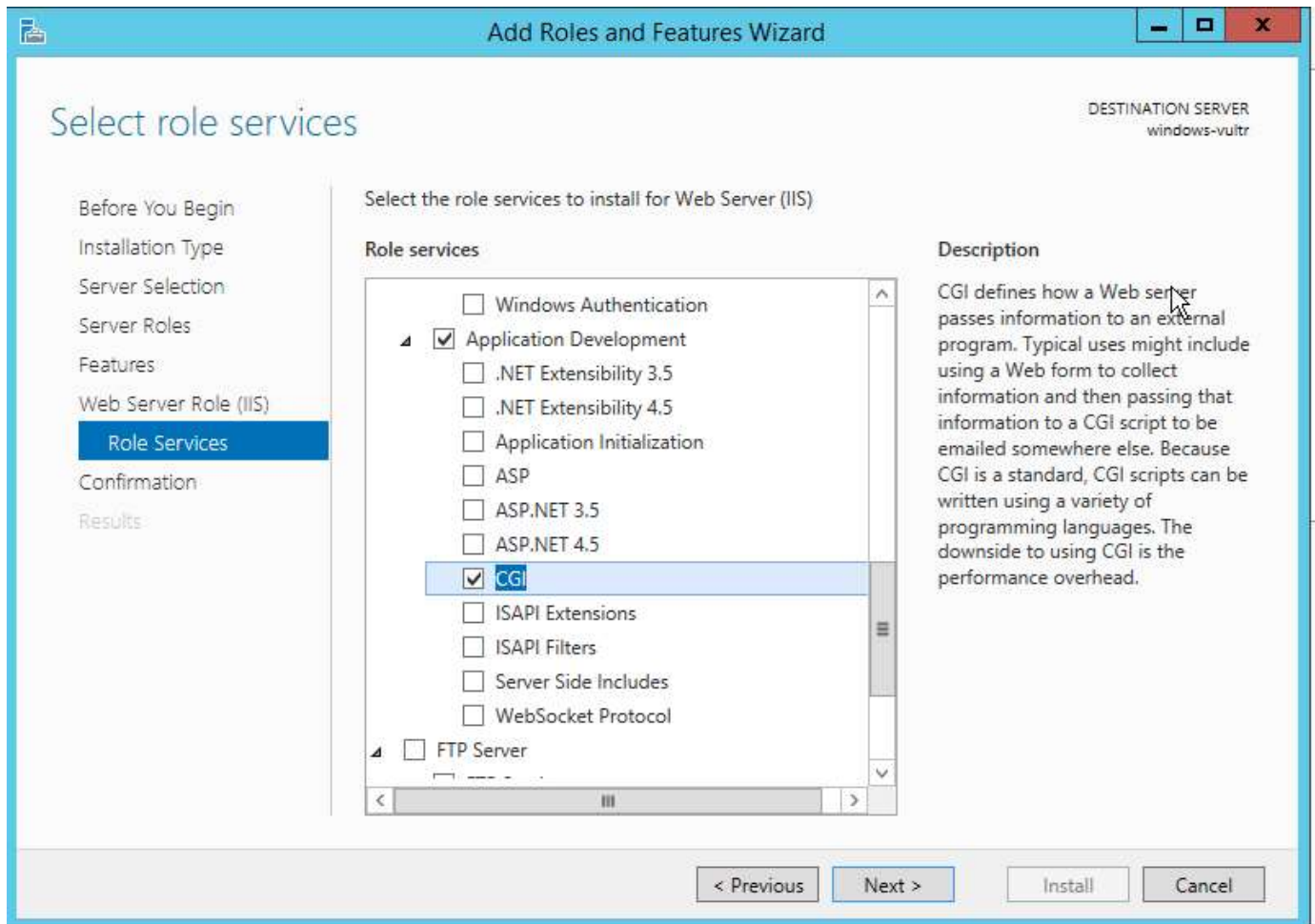
Choose "Web Server (IIS)":



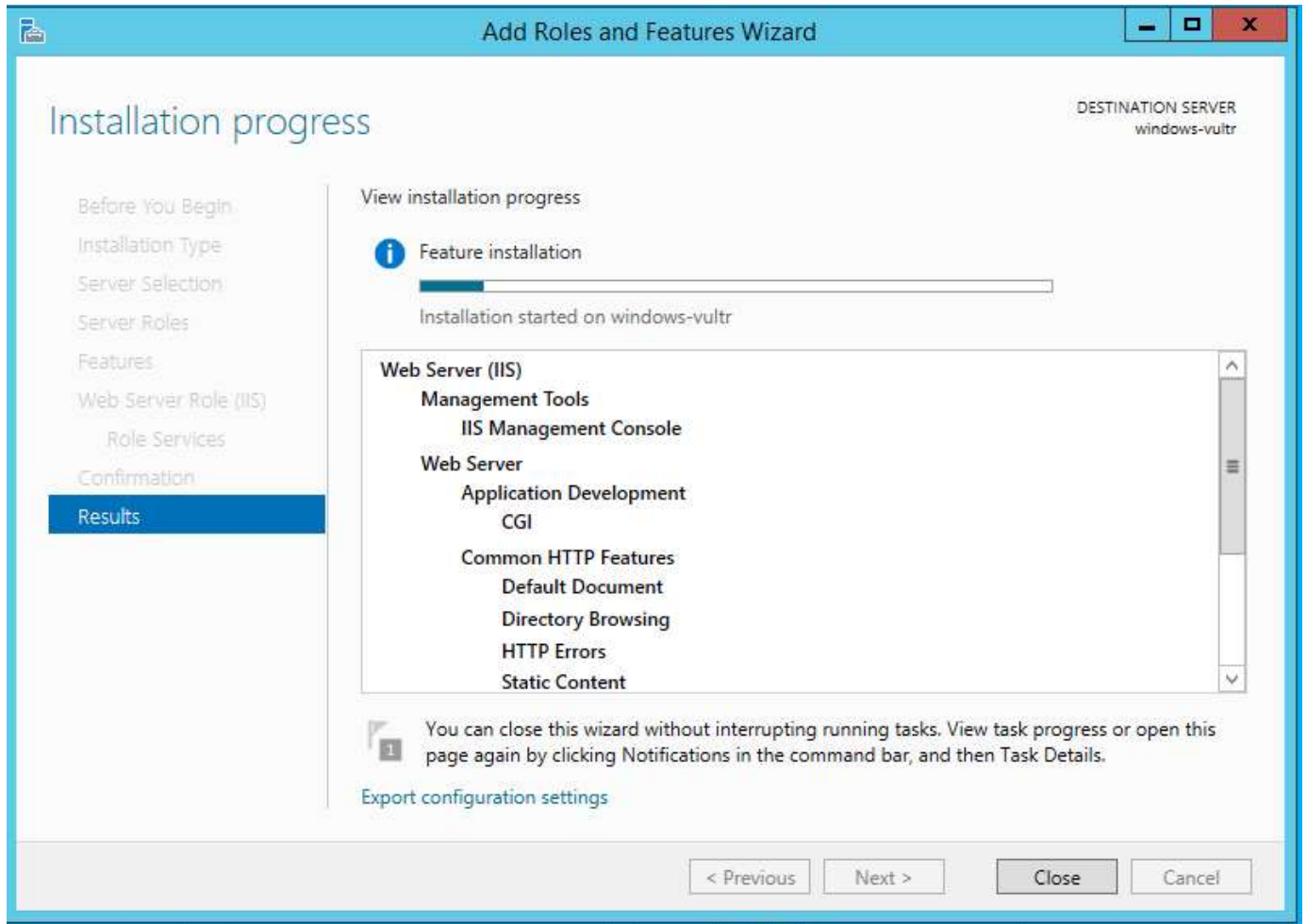
Click "Add Features":



Accept the defaults until you reach the "Role Services" screen. At this point make sure "CGI" is selected:

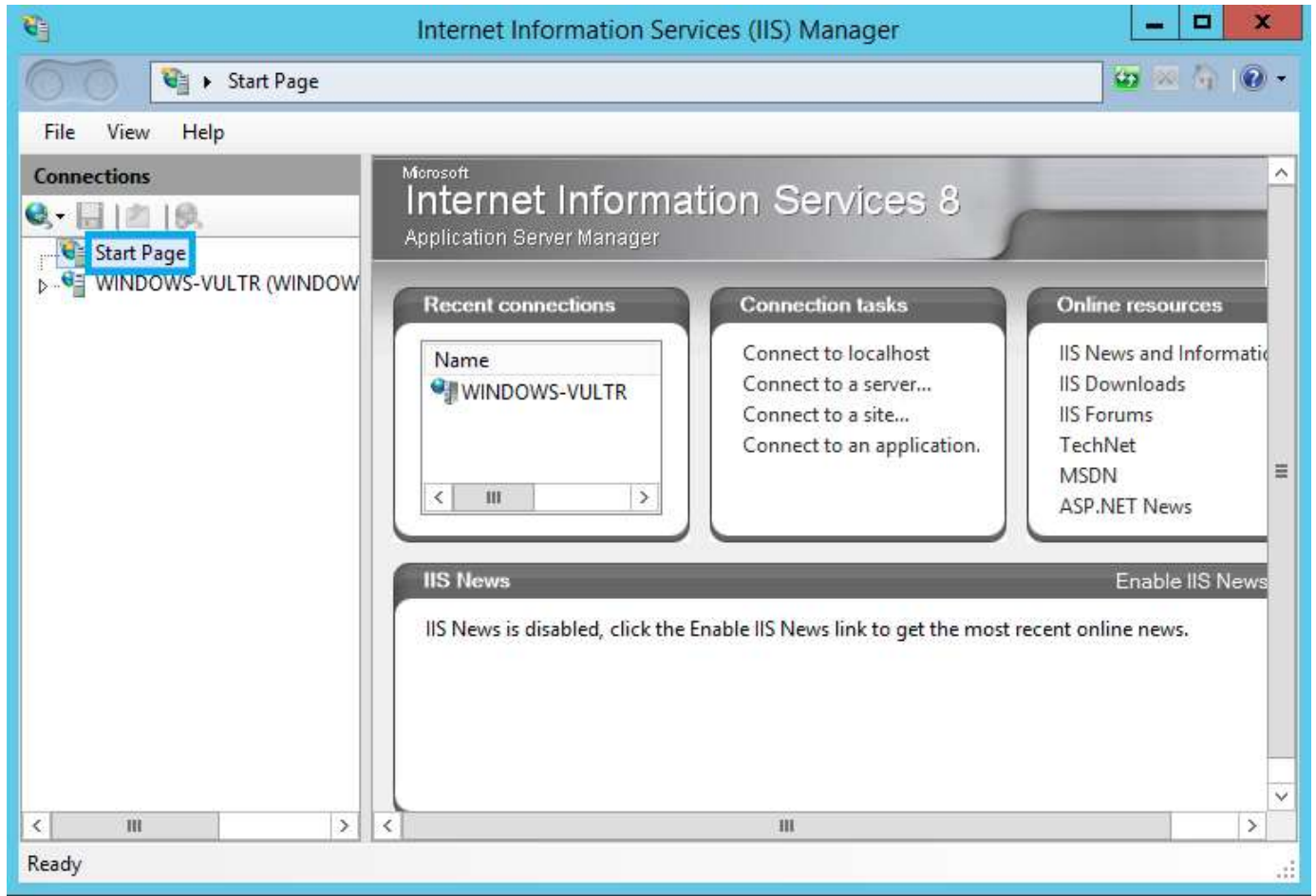


Click next, accept defaults and click "Install". You should see this screen:

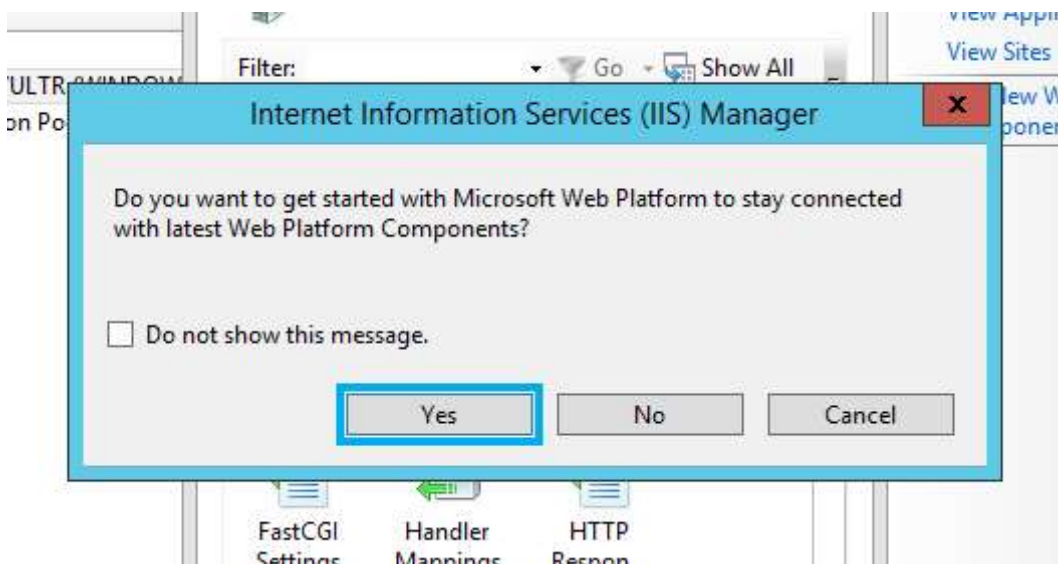


Launch the IIS Manager:

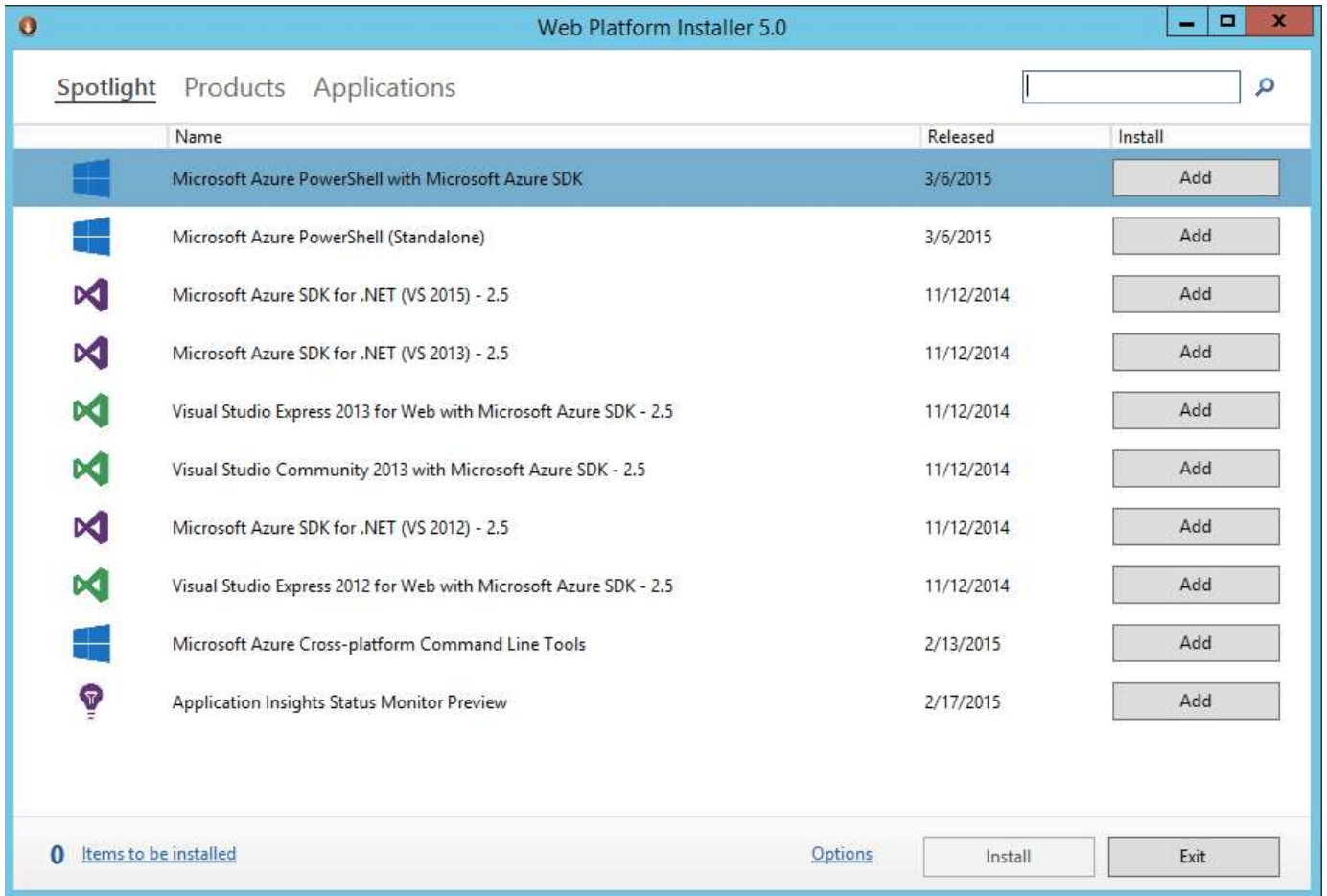




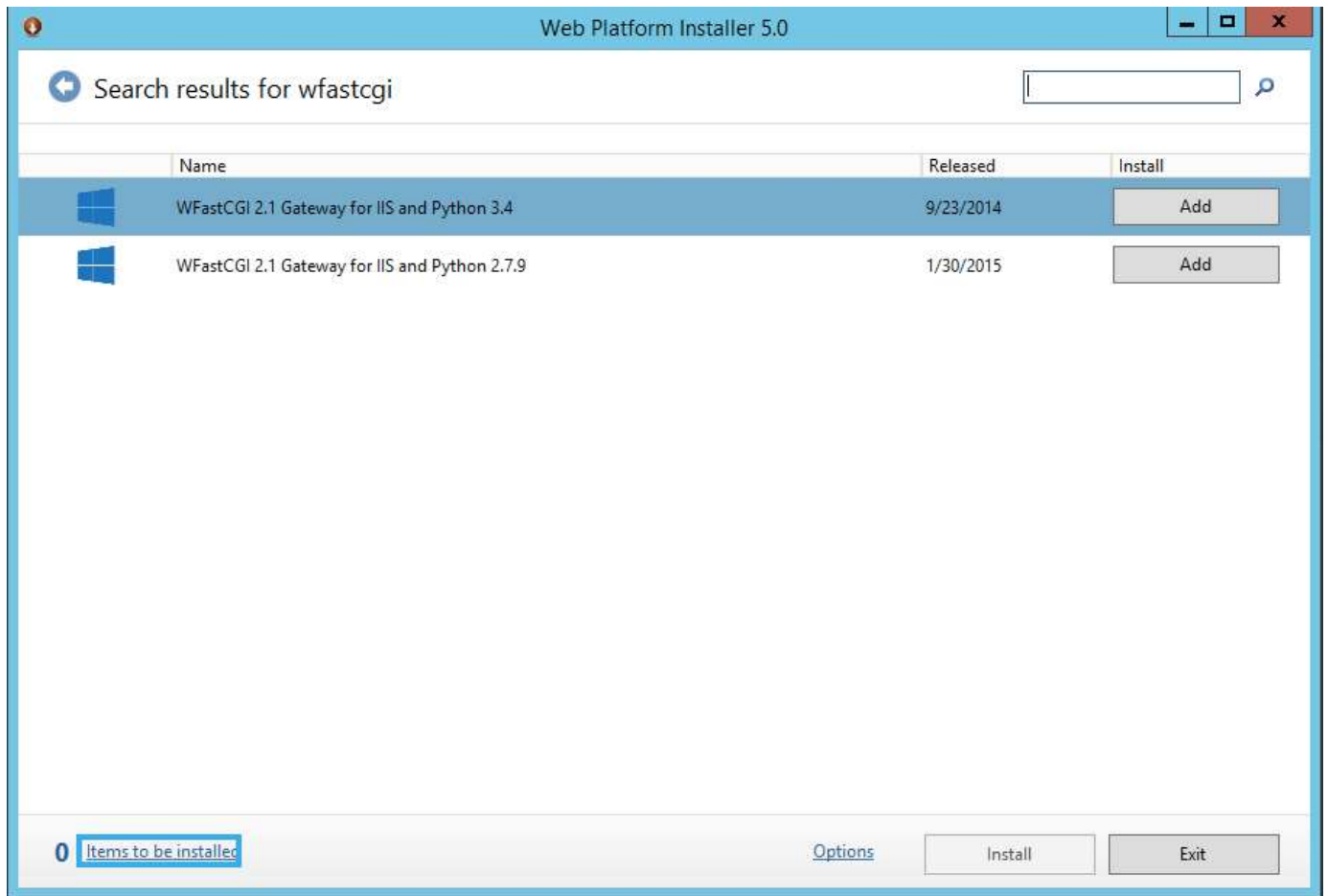
If this message pops up, click "Yes" - otherwise you'll need to download and install the [Web Platform Installer](#) if you haven't already installed it:



Run the installer

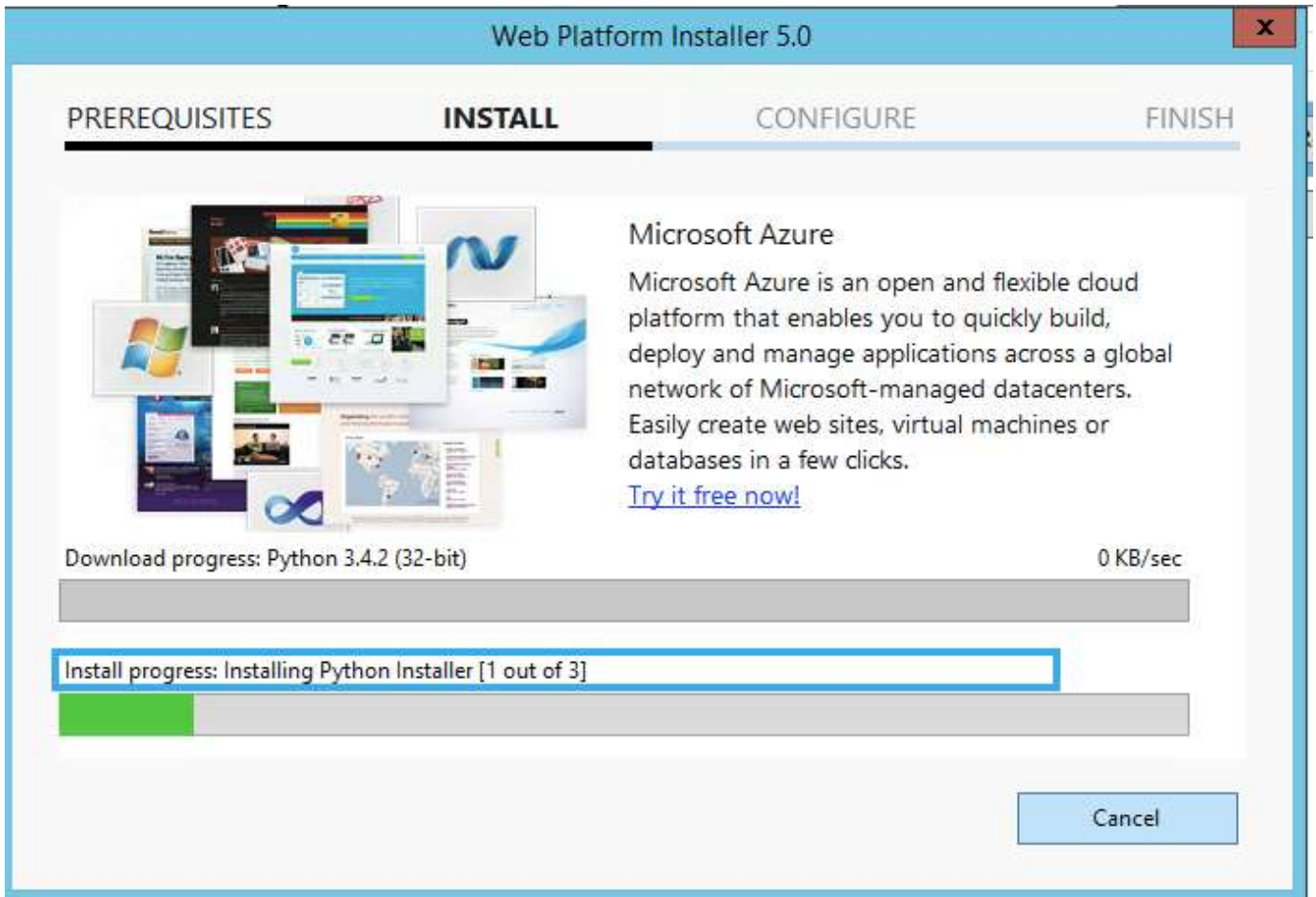


Search for WFastCGI

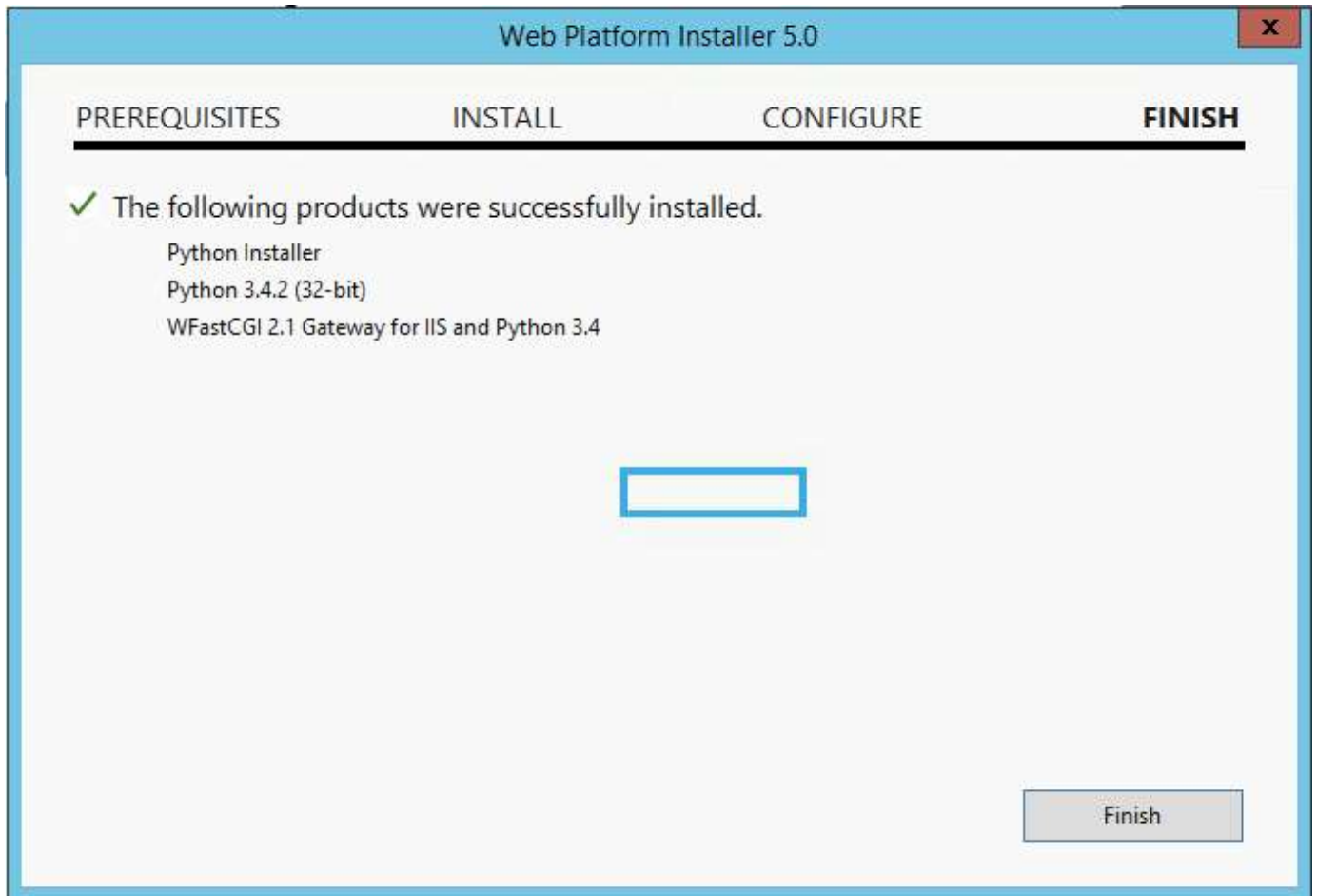


Select the appropriate Python version (3.4 or 2.7.9). We'll choose 3.4. Click "Add", then click "Install".

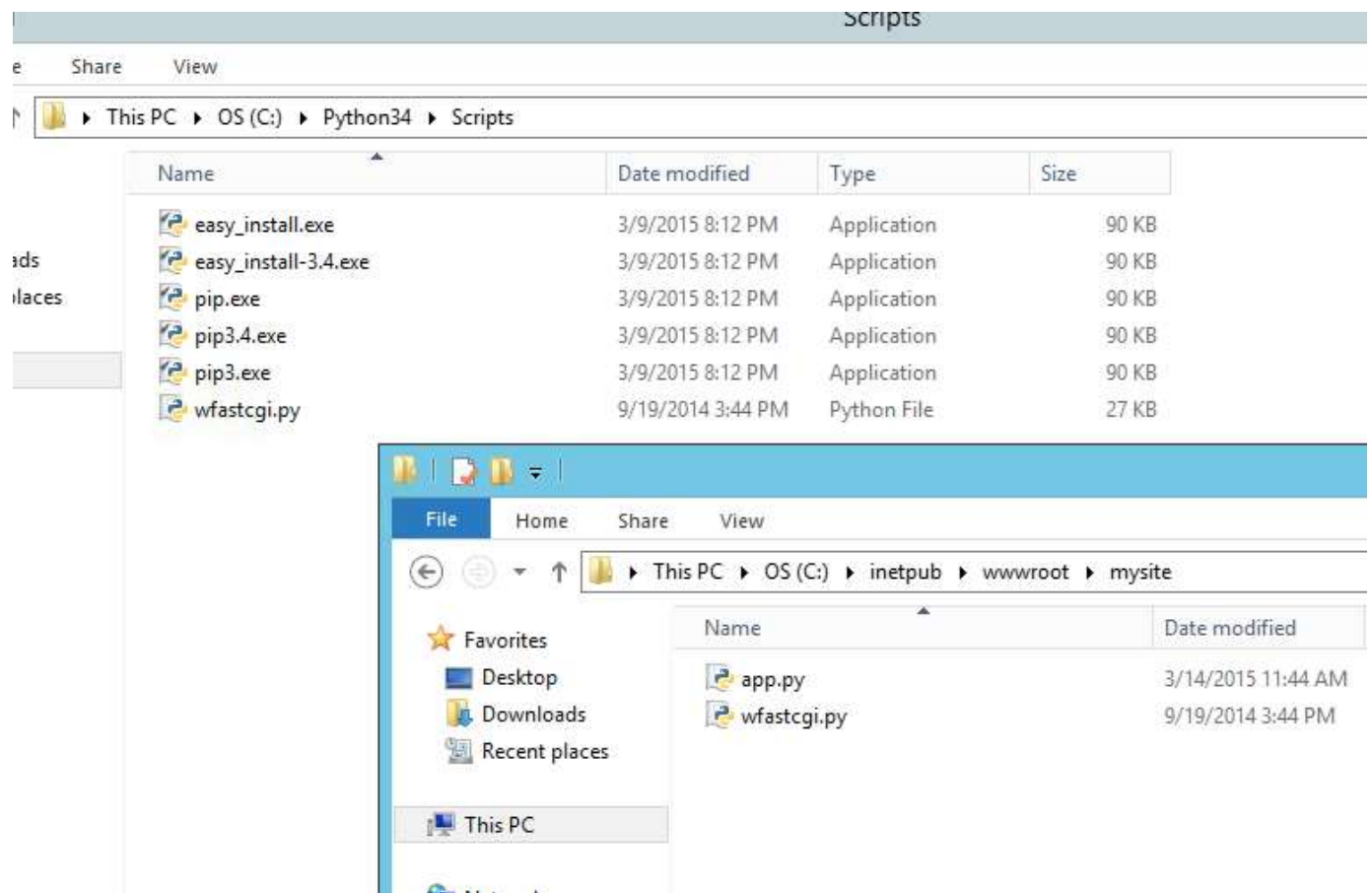
Read and accept the license (if you want to continue):



Once you're done - you should see this screen:



Setup your site - copy the wfastcgi.py from C:\Python34 (may be named C:\Python34\_x86 if you had an existing Python34 directory) to your Flask application root:



Double click "Handler Mappings"



## Default Web Site Home

Filter:  Go  Show All | Group by:

IIS

- Authentic...
- CGI
- Compression
- Default Document
- Directory Browsing
- Error Pages
- Handler Mappings**
- HTTP Respon...
- Logging
- MIME Types
- Modules
- Output Caching
- Request Filtering
- SSL Settings

Management

- Configurat... Editor

Click "Add Module Mapping"

**Add Module Mapping** [?] [X]

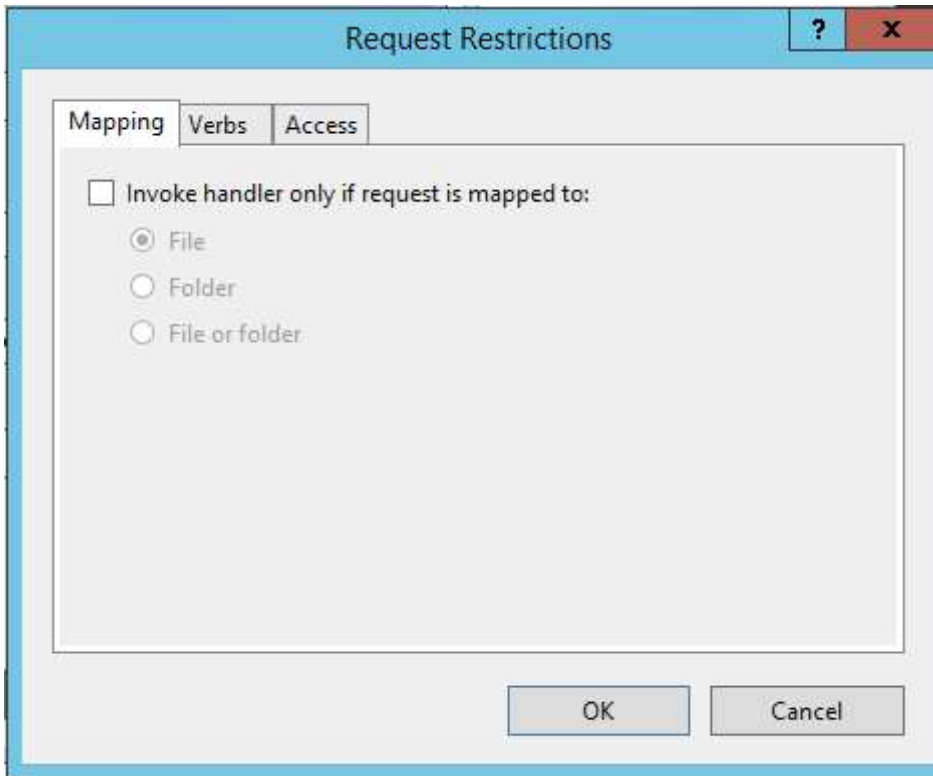
Request path:  
  
Example: \*.bas, wsvc.axd

Module:

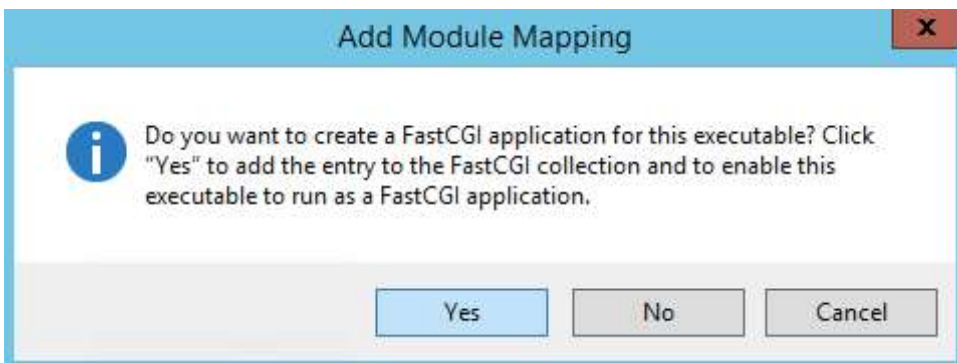
Executable (optional):  
 ...

Name:

Click "Request Restrictions". Make sure "Invoke handler only if request is mapped to:" checkbox is unchecked:



Click "Yes" here:



Go to the root server settings and click "FastCGI Settings":

